

Tasburgh Parish Council

Annual Report 2020/21

Contacting the Parish Council

If you have any comments about Tasburgh Parish Council and its work or you have any issues you wish to be raised please contact one of the Councillors or the Parish Clerk, contact details are below.

Councillors

Geoff Merchant	14 Orchard Way geoffmerchant@btinternet.com	470606
Jill Casson	12 Hastings Close chair.tasburghpc@gmail.com	470334
Brian Hill	8 Harvey Close brianhill.tasburghpc@gmail.com	471011
Keith Read	Thornly Barn, Saxlingham Lane k.a.read@btinternet.com	470229
Andrew Patrick	Jasmine Cottage andrewpatrick.tasburghpc@gmail.com	07775 898301
Willie Crawshay	The Grange, Low Road willie.crawshay@btconnect.com	471650
Matthew Read	1 Harvey Close matt.read.taspc@gmail.com	470612
Adrienne Watts	Grove Cottage awatts.tas@hotmail.co.uk	470217
Preston Thomas	4 Church Road prestonthomas.tasburghpc@gmail.com	07730 049077

Clerk

Tina Eagle 17 Alder Close, Poringland NR14 7LY
tasburghpc@btinternet.com 494569

Website

<https://tasburghpc.wixsite.com/tasburghpc>

Chairman's Report

This is the first report for two years, as last year's meeting was cancelled due to the pandemic. May I start by welcoming Andrew Patrick and Preston Thomas to the Council, although elected in 2019 we were unable to formally welcome them last year.

All will agree that we have just experienced a year like no other. To add to the Covid-19 problems, we then experienced once in a generation flooding at Christmas. However, amongst the hardships there are positives; our community has come together to help and support each other, and our beautiful countryside helped to sustain many, especially during last year's wonderful Spring. Hopefully with the vaccination program there is now light at the end of the tunnel. Our thanks go out to everyone who helped to support someone else in any way during this year.

Another brilliant thing to come out of last year's lockdown was the 'snake rock', where children (and adults) added painted rocks to form a long snake along Grove Lane. This achievement will be commemorated with a new board displaying all of the rocks, which will be erected soon.

The Parish Council has successfully adapted to remote meetings during this year, and following last year's forced cancellation we are hoping to repeat that success by holding our Annual Parish Meeting remotely in April.

Much of my last report was taken up by the Greater Norwich Development Plan and the threat this may present to Tasburgh. The threat of large-scale development seems to have receded for now. However, we have realised that we need a long-term plan to protect our village, and to this end our Neighbourhood plan is developing well.

The 'Hempnall roundabout' has been completed, but traffic problems within the village remain. Via the SAMs machine, we continue to monitor speeds and volumes, and have begun a log to

record accidents and incidents. Wheelie bin stickers have also been introduced on Church Road, Grove Lane and the Low Road to attempt to reduce speeds, and there are currently plans to increase signage along the Low Road.

Finally, recently three councillors, Keith Read, Geoff Merchant and Brian Hill have met the amazing record of 40 years on Tasburgh Parish Council. Congratulations to all, and our thanks go out to them for all of their years of service.

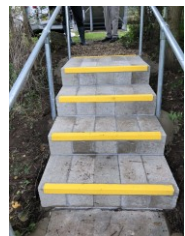
Jill Casson, Chair

Your Council Tax 2020/21

The Parish Council is pleased to report that the precept (the parish council's share of the council tax) saw no increase for the financial year 2020/21. Budgeted general expenditure has remained broadly the same as the previous year. The Parish Council had ear-marked funds for potential identified projects and grant funding which could be applied for by local community groups. Any remaining funds at year end continue to be transferred into the contingency funds for Burrfield Park and the Playarea. The Parish Council remains in a good financial position, maintaining good value for money on all purchases and projects.

Tasburgh Allotments

The entrance to the allotments now has brand new steps! The old ones were wooden, and rotting quite badly. They have now been replaced with concrete steps that should be better to withstand the constant tramp of muddy booted feet.



Neighbourhood Plan

This is by far the biggest initiative that the Parish Council has considered taking on. Neighbourhood Planning offers the

opportunity for the community to shape and influence development in Tasburgh. The Plan will be community led and evidence based. In 2020/21 the Neighbourhood Plan Advisory Group have:

- recruited a mix of councillors and residents to the Advisory Group.
- submitted our application to create a Neighbourhood Plan within a designated Parish boundary which was approved by South Norfolk Council.
- drawn up our Terms of Reference which have been approved by the Parish Council.
- held short, remote, monthly meetings open to observers and interested residents.
- obtained a start-up grant from South Norfolk Council of £3610
- surveyed residents to generate interest and to find out what people value about living in Tasburgh and ideas about the village in years to come.

Community Speed Watch

Our Speed Watch group of volunteers will continue to regularly monitor traffic speeds at key spots within COVID-19 guidelines. Since the easing of lockdown restrictions SAMS data has been downloaded and shared with our Community Police Beat Manager and Community Speed Watch Co-ordinator for monitoring.

If you are concerned about speeding traffic in the village, can spare a few hours to volunteer and would like more information please get in contact with the Scheme Co-ordinator Willie Crawshay, or the Clerk for more information on the scheme.

Hempnall Crossroads

The new roundabout at the Hempnall crossroads fully opened in December 2019. Hopefully this will reduce accidents on this busy road. The Parish Council continues to monitor the effect this new roundabout may have on traffic movements within the village.

Burrfield Park

Tasburgh Parish Council has responsibility for this wildlife site in Lower Tasburgh, which is open for the public to enjoy. National Tree planting week in November saw the planting of some eighty plus trees and hedging on the boundary line at Burrfield Park provided free by the South Norfolk Tree Warden Network. With help from some members of the Burrfield Park Advisory Group and volunteers the trees and hedging will in time provide screening to the neighbouring property and provide a habitat for insects and birds.

Dog Bins

A reminder to dog-walkers that you do not have to put dog waste in one of the special red dog bins. It can also be placed in ordinary domestic black bins.

Parish Council Website / Accessibility Regulations

The Parish Council website is fully compliant with the new Accessibility Regulations that come into force September 2020. It continues to be regularly updated with information including Agenda's and Minutes which can be found at <https://tasburghpc.wixsite.com/tasburghpc>. We very much hope you find your visit/s helpful.

We also have our Facebook page (www.facebook.com/Tasburgh-Parish-Council) where you can keep up-to-date with everything that is happening in and around the village. This can range from providing information on new planning applications to details of upcoming road closures so please do continue to like us.

If you have an event you would like to publicise on either the website or the Facebook page, please email details to the Clerk.

Highway Matters

Remember, as residents you can also report pot holes as well as the Parish Council can. You can report anonymously, or you can register. If you register you will receive updates on the steps taken to resolve the problem

www.norfolk.gov.uk/roads-and-transport/roads/report-a-problem

The Slow down markings have also been refreshed just before the bends, and the pedestrian signage was also updated. The railings at the Ford have also been repaired by the Bridges Safety Team.

2021/22 Action Plan

Tasburgh Parish Council will publish an action plan annually in May.

Tasburgh Parish Council will continually review the action plan, and will add any matters as required through the year.

The 2021/22 Action Plan will be agreed at the council's meeting in May. It is expected that the following items will be included within the action plan:

- To continue to contribute to the planning process for the Long Stratton development and bypass
- To maintain appropriate management arrangements for Burrfield Park, and to ensure that the Park and Charity is properly administered and is safe and pleasant for those visiting.
- To continue to ensure good governance of the Parish
- To maintain an overview of traffic matters and ensure the safety of our public places.
- To continue to progress and develop a Neighbourhood Plan for Tasburgh
- To progress cycle path discussions with Long Stratton Parish Council

Meetings

Parish Council meetings are held on the third Tuesday of the month at 8pm (refreshments available from 7.30pm).

Planning Meetings, if required, are held on the first Tuesday of the month at 8pm. Both meetings are usually in the Village Hall Committee Room and **agendas** are posted on the village notice boards and the website at least three days beforehand.

Public are welcome to attend all Parish Council meetings; there's an opportunity to speak or ask questions.

Please note if you would like an item to appear on the agenda details must be sent to the Clerk at least eight days before the meeting. The Council is unable to make a decision on anything not included on the agenda but can discuss it and refer it to the next meeting.

Minutes of meetings are posted on the website or are available from the Clerk.

Parish Council Surgeries Future Meeting Dates

Councillors are always willing to discuss any issues with you; their contact details are on page 2. In addition Councillors are available on the evenings of their main council between 7.30pm and 8pm for informal discussion during which time refreshments are served. Unless remote meeting continues.

The Council will meet on the following dates for 2021

1 st June Planning Meeting	21 st September
15 th June	5 th October Planning Meeting
6 th July Planning Meeting	19 th October Meeting
20 th July	2 nd November Planning Meeting
3 rd August Planning Meeting	16 th November
17 th August	7 th December Planning Meeting
7 th September Planning Meeting	14 th December

Summary of Parish Council Accounts 2020/21

Payments	2019/20	Budget	Actual	(Over)/
	£	2020/21	2020/21	Under
	£	£	£	Spent
				£
Reoccurring Expenditure				
Administration	5457.56	5371.00	5187.07	183.93
HR	6749.10	7224.00	7189.32	34.68
Maintenance	2311.95	2612.00	1789.92	822.08
Grass Cutting	3652.00	2861.00	3943.00	(1082.00)
Other	1647.86	220.00	96.00	124.00
Subtotal	19,818.47	18,288.00	18,205.31	82.69
Projects				
Unallocated Projects	935.00	2500.00	833.83	1666.17
Grants Local Groups	100.00	2500.00	-	2500.00
War Memorial	410.00			
Contingency	130.00	800.00		800.00
VAT	944.78		828.67	
Subtotal	2,519.78		1,662.50	
Grand Total	22,338.25		19,867.81	

Summary of Parish Council Accounts 2020/21

Receipts	2019/20	2020/21
	£	£
Precept	21753.82	21,700.82
Interest	26.21	6.49
Quarterly Advertising	1141.92	1210.47
VAT Refund	580.91	1773.45
Grants & Refunds	20.00	189.80
Verge Cutting Contract	1225.87	1255.97
Grass Cutting Maintenance	1050.00	1082.00
Allotment Tenancy	250.00	250.00
Church News & Yellow Pages Printing	520.00	520.00
Other	166.30	100.00
Community Infrastructure Levy (Cil)		11813.25
Neighbourhood Plan funding		3610.00
Total	26,735.03	43,512.25

Reconciliation

Opening Balance @ 31st March 2020	41,880.97
Total Income	43,512.25
Total Expenditure	19,867.81
Closing Balance @ 31st March 2021	65,525.41

Represented by:

Current Account	51,346.92
Barclays High Interest Account	14,217.49
Less unrepresented cheques	39.00
Total	65,525.41

Thank you for taking the time
to read this document,
if you have any views or comments
please let us know.



Tasburgh Parish Council

17 Alder Close

Poringland

Norfolk

NR14 7LY

01508 494569

tasburghpc@btinternet.com

<https://tasburghpc.wixsite.com/tasburghpc>

Published